

2013 STM Einzel



Oil Pattern Distance: 41 Feet	Reverse Brush Drop: 31 Feet	Oil Per Board: 50 uL
Forward Oil Total: 23.95 mL	Reverse Oil Total: 3.4 mL	Volume Oil Total: 27.35 mL
Forward Boards Crossed: 479 Boards	Reverse Boards Crossed: 68 Boards	Total Boards Crossed: 547 Boards

	Start	Stop	Loads	Speed	Crossed	Start	End	Feet	T.Oil
1	2L	2R	6	10	222	0.0	7.0	7.0	11100
2	5L	5R	1	14	31	7.0	8.9	1.9	1550
3	6L	6R	1	14	29	8.9	10.8	1.9	1450
4	7L	7R	2	14	54	10.8	14.7	3.9	2700
5	8L	8R	2	14	50	14.7	18.6	3.9	2500
6	9L	9R	1	14	23	18.6	20.5	1.9	1150
7	10L	10R	1	18	21	20.5	23.0	2.5	1050
8	11L	11R	1	18	19	23.0	25.5	2.5	950
9	12L	12R	1	18	17	25.5	28.0	2.5	850
10	14L	14R	1	18	13	28.0	30.5	2.5	650
11	2L	2R	0	18	0	30.5	33.0	2.5	0
12	2L	2R	0	26	0	33.0	41.0	8.0	0

Navigation: Forward Reverse More

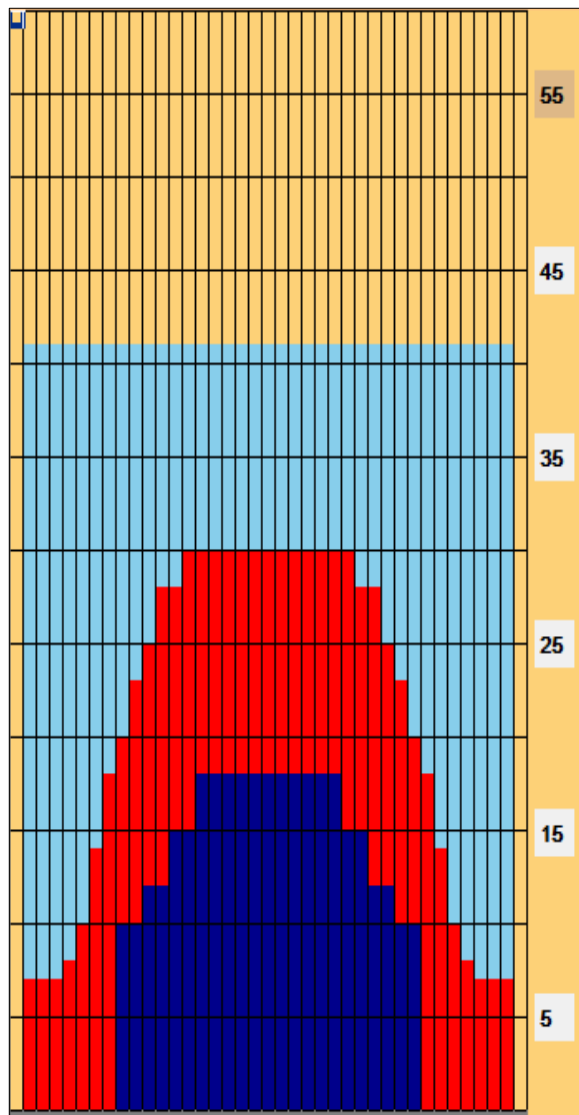
	Start	Stop	Loads	Speed	Crossed	Start	End	Feet	T.Oil
1	2L	2R	0	30	0	41.0	18.0	-23.0	0
2	15L	15R	1	22	11	18.0	14.9	-3.1	550
3	13L	13R	1	18	15	14.9	12.4	-2.5	750
4	11L	11R	1	18	19	12.4	9.9	-2.5	950
5	9L	9R	1	18	23	9.9	7.4	-2.5	1150
6	2L	2R	0	14	0	7.4	0.0	-7.4	0

Navigation: Forward Reverse More

Conditioner:
Type In or Select One

TransferType:
Type In or Select One

- Forward
- Reverse
- Combined
- Buff



Lane surface: Brunswick ProAnvilane | Pinsetters: Brunswick GS-X | Pins: AMF Amflight II | Lane machines: Kegel Lane Walker | Conditioner: Kegel Infinity | Cleaner: Kegel Defense-C (mixed 4:1)

Item	3L-7L:18L-18R	8L-12L:18L-18R	13L-17L:18L-18R	18L-18R:17R-13R	18L-18R:12R-8R	18L-18R:7R-3R
Description	Outside Track:Middle	Middle Track:Middle	Inside Track:Middle	Middle: Inside Track	Middle:Middle Track	Middle:Outside Track
Track Zone Ratio	2.84	1.38	1.03	1.03	1.38	2.84

